



**ACTYON**  
***SPORTS***

***More Power, More Fun***

# MORE POWER MORE FUN

*The great utility, comfort and versatility of New Actyon Sports bring greater enjoyment to your leisure. That translates into a better quality of life.*



# TRAVELING IS MORE PLEASURABLE



## **FRONT BUMPER**

The front bumper projects a rugged and sporty appeal.



## **RADIATOR GRILLE**

The mesh grill is finished with chrome and black gloss for a distinguished, imposing feel.



## **OUTSIDE MIRRORS**

The wide side mirrors minimize blind spots.



## **BLACK BEZEL HEADLAMPS**

The black bezel headlamps with elegant chrome trim provide a distinctive image of classiness and strength.



## **FOG LAMPS**

These distinctive fog lamps come with a wide reflection surface for enhanced performance.





## INTERIOR



### BLUETOOTH / RDS AUDIO

MP3 / CD players for CDs, MP3 files, and WMA files, FM/AM radio, Bluetooth wireless communication allows the driver to operate the audio system USB 2.0, aux port, and four speakers without letting go of the steering wheel.



### MANUAL SHIFT LEVER KNOB

The silver paint matches well with the black interior. The manual transmission is equipped with six forward gears for better driving performance and fuel efficiency.



## CONVENIENCE

When you drive the Actyon Sports, you'll be pleased to find that it has a CD player with MP3, Bluetooth and USB Port capabilities and it even comes with steering wheel mounted audio controls.

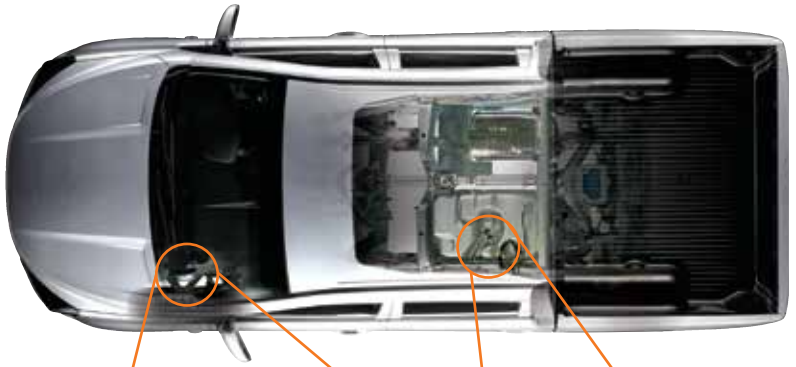
Driver's seat can be adjusted to the user's comfort.



# DRIVING AND PERFORMANCE

## DOUBLE-WISHBONE SUSPENSION FRONT WHEELS

Parallel arms are used to locate the wheel, providing independent suspension that maintains constant surface contact under changing conditions.



An ultra-rigid steel frame with triple-layer construction for maximum passive safety protection

## ALL DISC BRAKE

Actyon Sports consists of disc brake on all four wheels assuring better safety.



## 5-LINK SUSPENSION

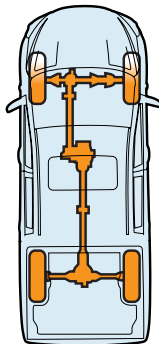
Five links effectively disperse road shock and offer a very comfortable ride. Each link bears a light load, improving durability.



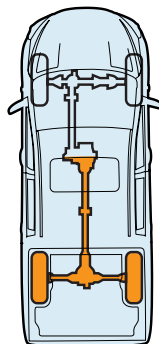
## LEAF SPRING

New Actyon Sports employs a distinctive suspension system that ensures outstanding ride quality.

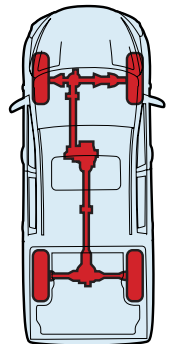
## PART-TIME ELECTRIC 4WD SYSTEM



4WD high-gear mode



2WD high-gear mode

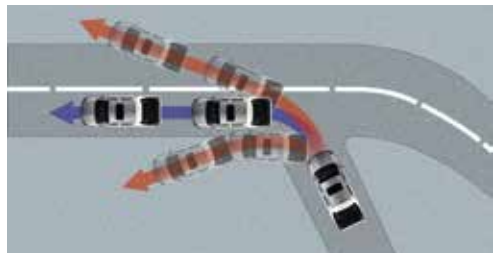


4WD low-gear mode

# SAFETY & STRENGTH

## AIRBAGS

Driver and front passenger air bags.



## ELECTRONIC STABILITY PROGRAMME

The sophisticated Electronic Stability Programme monitors road conditions and vehicular status, ready to adjust engine output and brake force automatically should the driver be in danger of losing control on wet or icy surfaces or in sharp turns at high speed.



## TAILGATE HINGE SPRING

Hinge springs on the tailgate reduces the force required to close the tailgate by 50 percent.



## THE SPORTY BED DESIGN OF NEW ACTYON SPORTS

The bed design is centered on width and height. The total area is 2.04m<sup>2</sup>, spacious enough to carry a diverse cargo range.

## CARGO AREA DIMENSION(MM)

Length	1,275
Width	1,600
Width between wheelhouses	1,128
Height	525



BRAKED (KG)	2,300
UNBRAKED (KG)	750



## KEY FEATURES

### Actyon Sports Pickup MT Loaded

#### SAFETY

Central Locking
ABS
Engine Immobilizer
Dual Airbags
Remote KeyLess Entry
Child Safety Door Locks
Front/Rear Seatbelts
Crumple Zones
Anti-theft Alarm

#### EXTERIOR

Body Coloured Bumpers
Front Fog Lamps
Roof Rack
Electrically Folding Outside Mirrors
Tubeless Tyres
16" (6.5J) Alloy Wheels

#### INTERIORS

Height Adjustable Driver's Seat
Tiltable Steering Column
Leather Wrapped Steering & Gear Knob

#### COMFORT & CONVENIENCE

Front Centre Arm Rest
Power Windows & Door Locks
Power Steering
Manual Air Conditioner
Folding & Dual Rekes only for DSL
Cup Holder
Rear Mud Guard
Part Time 4WD

#### AUDIO

2DIN CD Player (MP3)
BlueTooth + USB Port
Steering Wheel Remotcontrol
Radio Data System

## ENGINE

### e-XDi200 Active diesel engine



Maximum torque is available at the 1,500~2,800 rpm range, where vehicle operation mostly occurs. As such the engine is highly fuel efficient. At 190Nm, low-end torque is the best in class, providing excellent performance when starting out on hills.

## COLOURS AVAILABLE



Indian Red (RAJ)



Canyon Brown (OAO)



Space Black (LAK)



Marble Grey (ACM)



Fine Silver (SAF)



Grand White (WAA)

# SPECIFICATION

## Actyon Sports Pickup MT Loaded

### ENGINE

Engine Type	2.0 L DSL
Engine Size (Displacement)	1998cc
Cylinders	4 inline
Max. Power : (PS/RPM)	155 @ 4000
Max. Torque: ( Nm/rpm)	360 @ 1500-2800 rpm
Transmission	6 Forward + 1 Reverse
Drive Style	4WD (Rear Driven)

### BRAKES

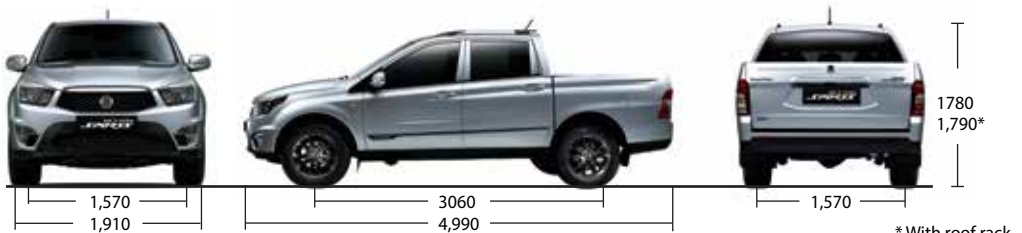
Front Brakes	Disc
Rear Brakes	Disc
Suspension	Double Wishbone/Leaf Spring Rigid Axle

### DIMENSIONS: (UNITS IN MM)

Length	4990
Width	1910
Height	1790 (with roof Rail)
Wheelbase	3060
Wheel tread front/rear	1570
Front Tyres	16" ALLOY WHEEL (6.5J)
Rear Tyres	
Fuel Tank Capacity(l)	57
Ground Clearance front/rear (mm)	212
Turning Circle	5.95
Kerb Weight ( Kg)	1982
Gross Vehicle Weight ( Kg)	2740

## DIMENSIONS

unit in mm



\* With roof rack



**Head Office:** KB Plaza Building, Kamaladi, Kathmandu, Nepal

Phone: +977 01 4251545/4251318 | Fax: +977 01 4251413

Website: [www.ims-np.com/ims-motors](http://www.ims-np.com/ims-motors)

[www.facebook.com/imsmotors](https://www.facebook.com/imsmotors)

[www.instagram.com/imsmotors](https://www.instagram.com/imsmotors)

### SHOWROOM:

Naxal (opposite to Police Headquarter)

Contact No: 01-4412055, 9802002750

Email Address: [info@imsmotors-np.com](mailto:info@imsmotors-np.com)

### SERVICE CENTRES:

**Inside Valley:** Auto Home Pvt. Ltd., Jwagal, UN Park, Lalitpur; T: +977 01 5260725/5260726

Auto Village Pvt. Ltd., Ratopul, Kathmandu; T: +977 01 4461794/4483065

### SPARE PARTS OUTLET:

Khushibu, Kathmandu; T: +977 9802002728

Features and specifications shown in the brochure are for general information only and may differ from actual vehicle available in the region.